

# Phoenix

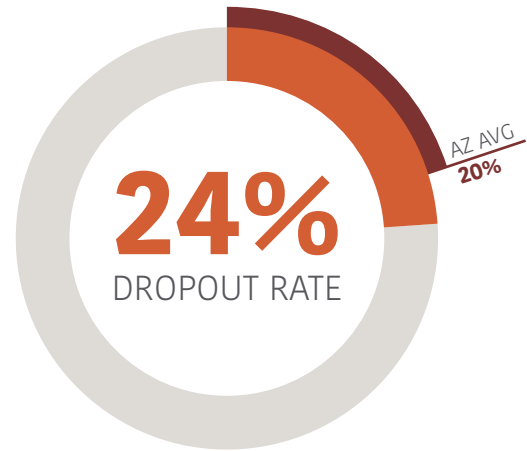
Phoenix is the nation's sixth-largest city, with a population of more than 1.5 million people. It is home to 325 public schools, along with more than 200 charter and private schools, across 30 school districts. The city sits within Maricopa County, which ranked second among the fastest-growing counties in the United States in 2014.

Just one the city's school districts, Phoenix Union High School District, is itself one of the largest high schools districts in the country. Phoenix Union covers more than 220 square miles, with 16 schools and more than 27,000 students. If the 110,000 students in the 13 K-8 schools in its 13 elementary partner schools were included, the district would be among the 25 largest school districts in the United States.

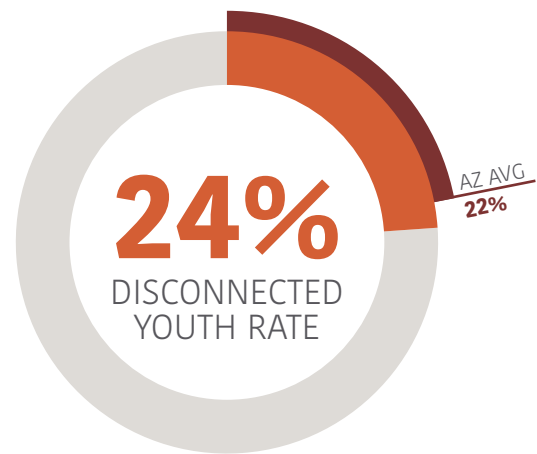
Mayor Greg Stanton has put education at the center of the City's efforts to create a talented workforce. One of Mayor Stanton's first priorities was to re-open the city's education office to increase college attainment in Phoenix and get all kids reading by third grade. This literacy milestone is crucial to helping a student get on track for later academic success and high school graduation.

The Read On Phoenix Initiative is a cross-sector partnership of school system, city and volunteer efforts to support school readiness, reduce summer learning loss and provide after school literacy enrichment. The ultimate goal is to get every third-grader in the city to read with proficiency.

The AARP Experience Corps and Phoenix Great Start initiatives focus resources on the city's youngest students to ensure early education success. A growing partnership between the city, Maricopa Community Colleges, Phoenix Union High Schools and Valley of the Sun United Way is working to increase college attainment, particularly for Phoenix's rapidly growing Hispanic youth population.



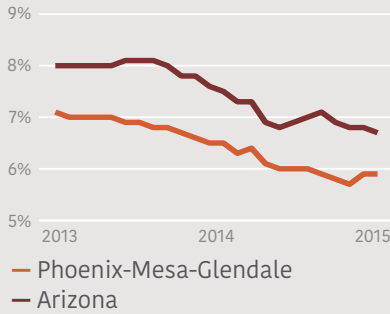
**3,070** dropouts per year  
**\$1.4 billion** lifetime economic loss



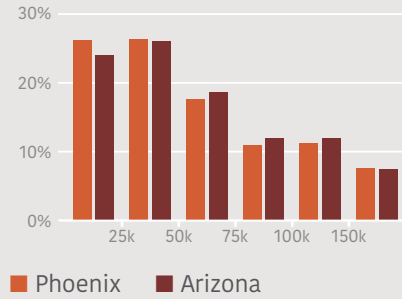
**45,042** disconnected youth  
**\$34.5 billion** lifetime economic loss

ECONOMIC LOSS BY RACE/ETHNICITY	White		Black		Hispanic	
	Male	Female	Male	Female	Male	Female
Lifetime loss per dropout	\$459,500	\$386,500	\$304,500	\$165,400	\$492,400	\$313,800
Lifetime loss per disconnected youth	\$862,900	\$698,500	\$958,600	\$817,500	\$743,600	\$673,500

## Unemployment Rate



## Household Income

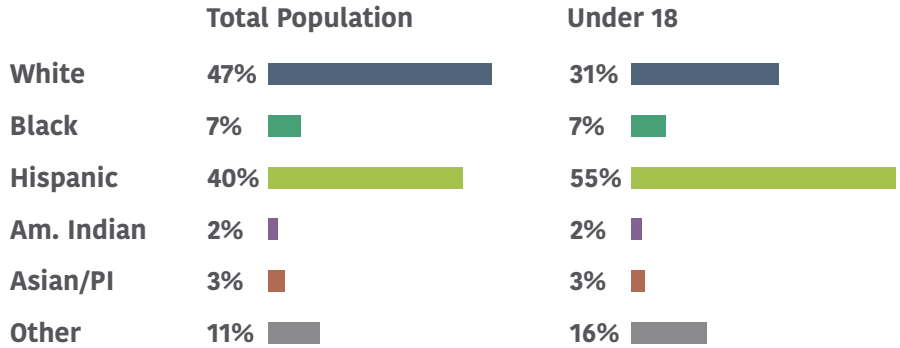


## ECONOMIC INDICATORS

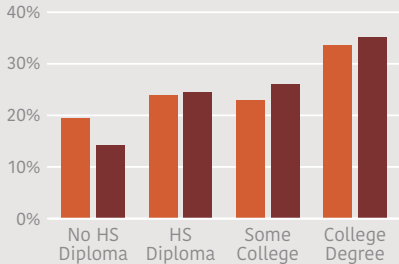
Education and the economy are closely intertwined subjects. In order to address educational challenges it is necessary to understand the economic context within which students, families and schools operate, while a well-educated population enjoys higher employment and incomes.

## DEMOGRAPHICS

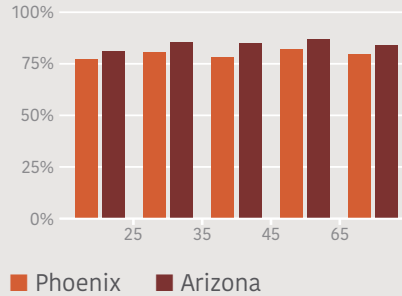
All across Arizona the demographic picture is changing rapidly. Comparing the racial/ethnic composition of the youth population with that of the city as a whole illustrates the pattern of these demographic shifts and the growth of the Hispanic population in particular.



## Education Attainment



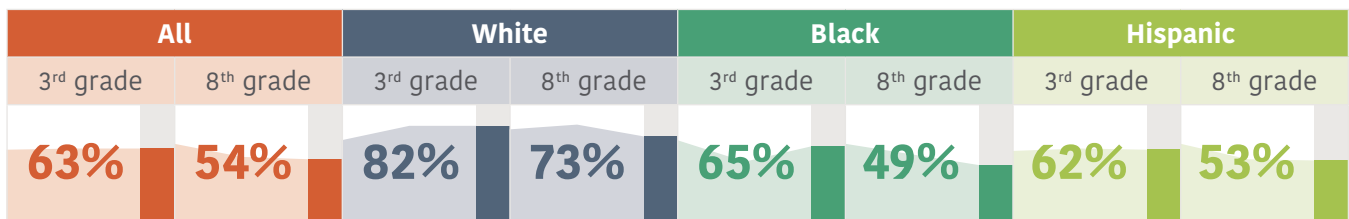
## HS Completion by Age



## EDUCATION RATES

Cities included in the profiles have a large amount of variation in the rates of education for their adult population. Educational outcomes for students are strongly associated with the education levels of their families and, to an extent, their communities.

## AIMS READING PROFICIENCY BY RACE/ETHNICITY



The Arizona Mayors Education Roundtable brings together mayors across the state to share data, promising practices and strategies to boost students' educational and career success. [azmayors.org](http://azmayors.org)



Sources: Arizona Department of Administration Local Area Unemployment Statistics, Seasonally Adjusted Tables, Updated January 22, 2015; US Census Bureau 2009-13 American Community Survey 5-Year Estimates; Arizona Department of Education Report Cards, [azreportcards.com](http://azreportcards.com)