

Decision Center for Educational Excellence

Arizona State University

Powered by Helios Education Foundation

Helios[®]
Education Foundation



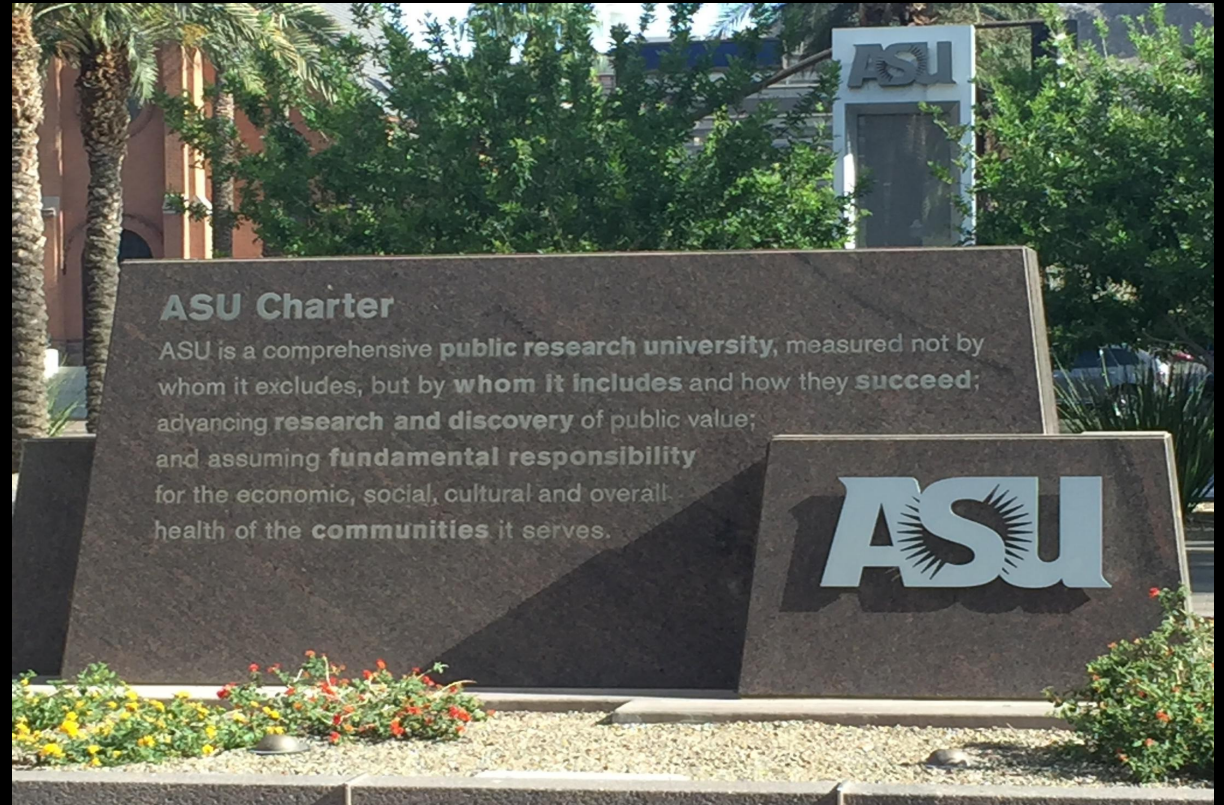
DecisionCenter.asu.edu



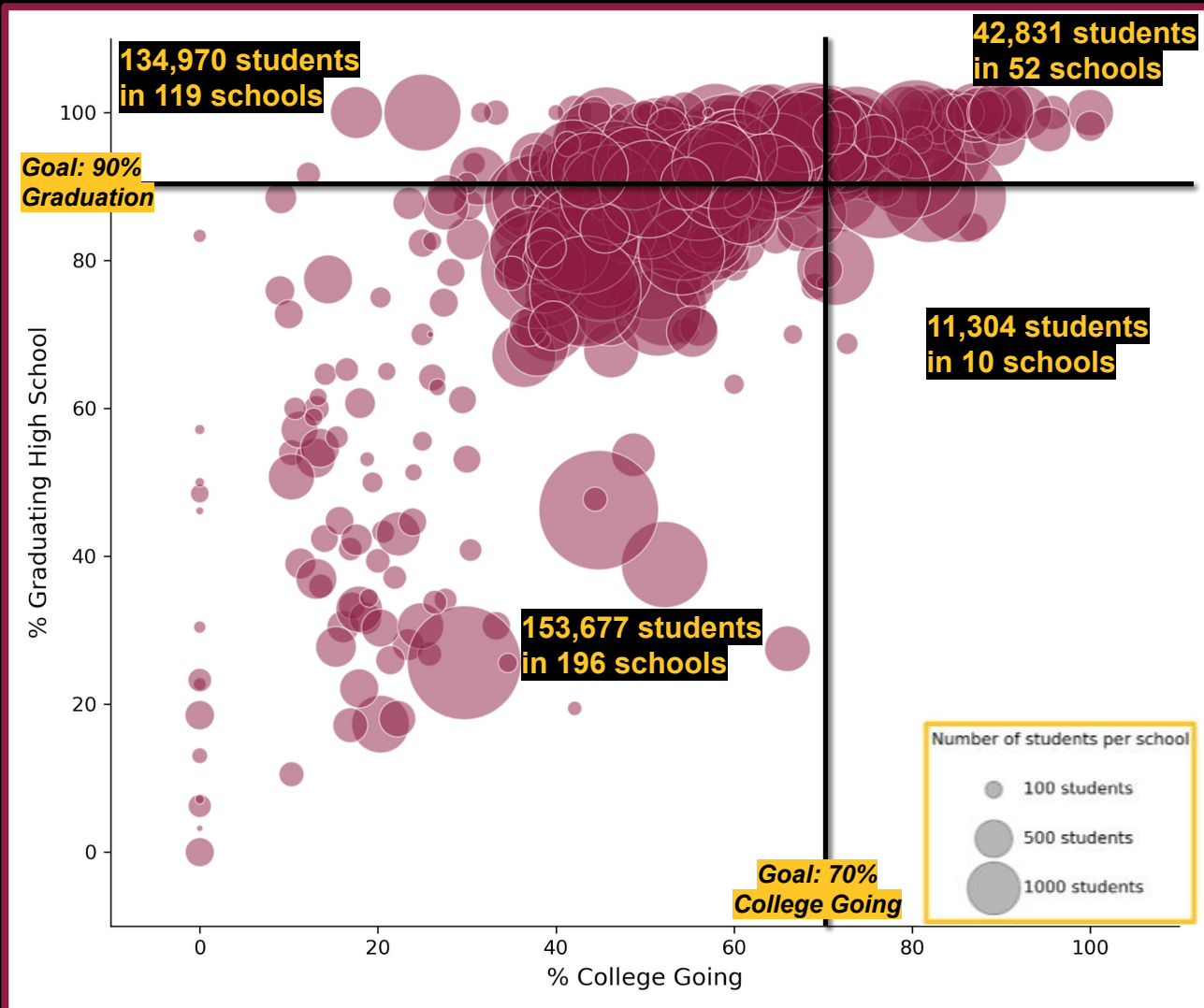
The Decision Center for Educational Excellence's Strategy

Data + ASU + Stakeholders =

Significantly better student outcomes & improved economic, social, cultural and health outcomes for the communities we serve



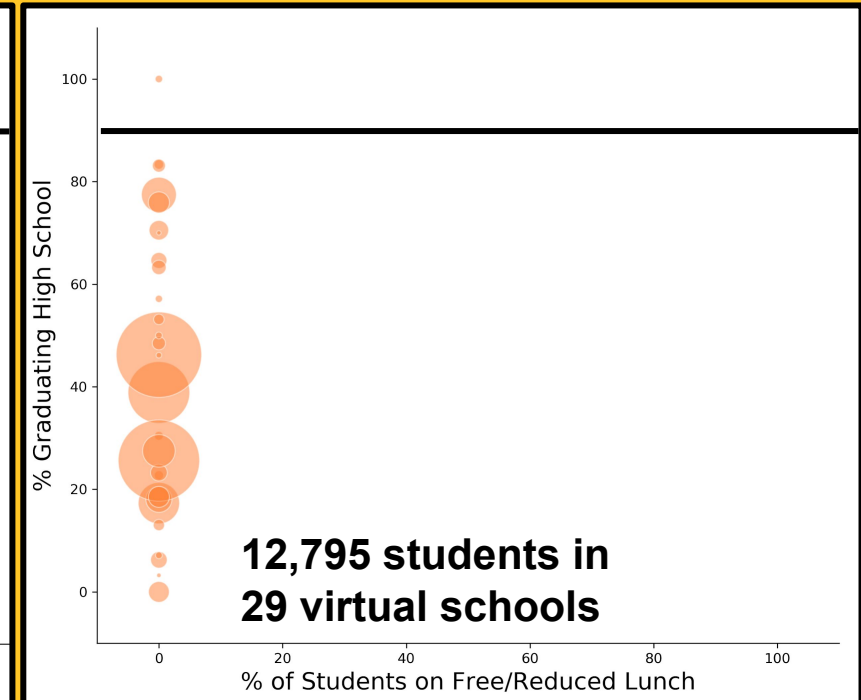
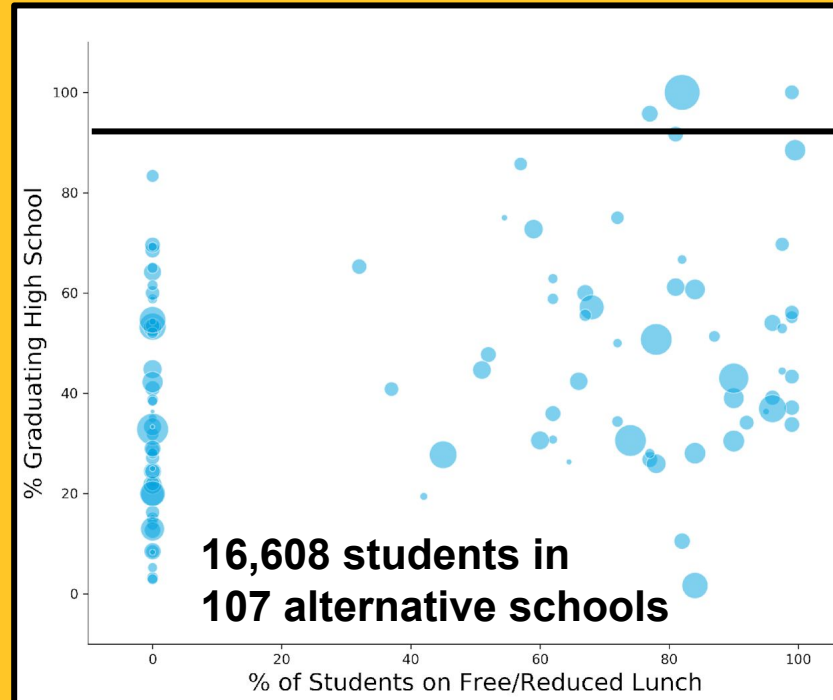
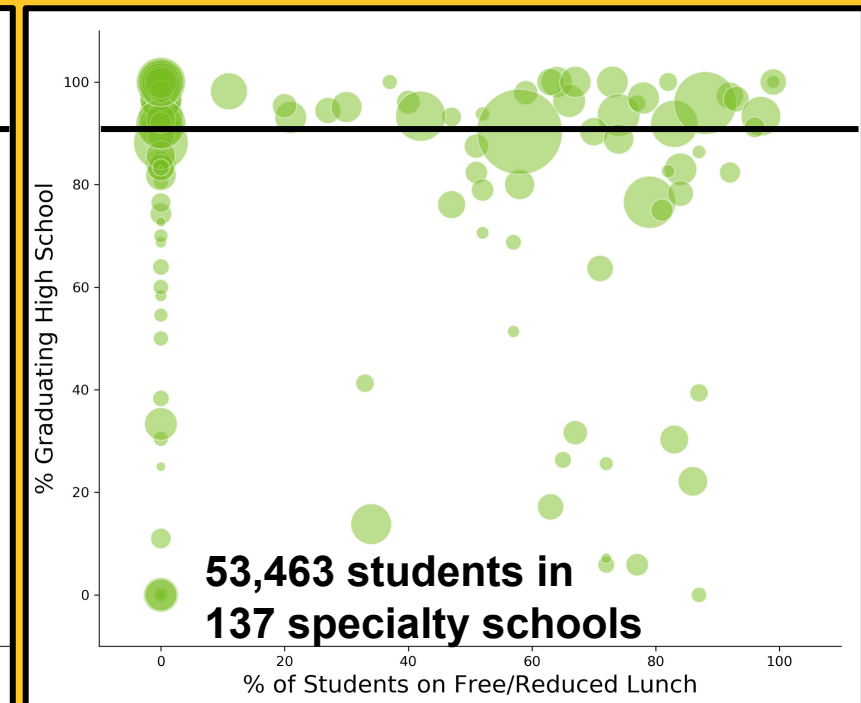
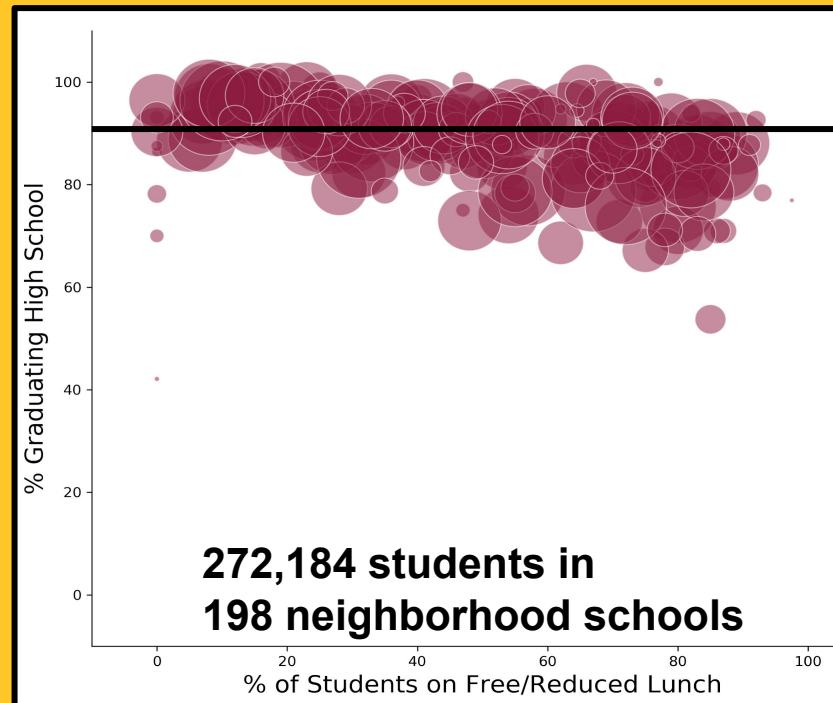
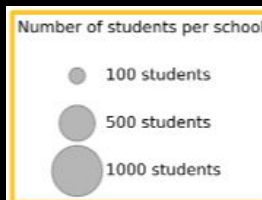
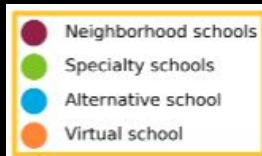
Few High Schools Currently Meet Arizona's Progress Meter Goals



- **Meet both goals:** 90%+ graduate high school, 70%+ enroll in post-secondary. (52 schools)
- **Meet graduation goal only:** 90%+ graduate high school, less than 70% enroll in post-secondary education. (119 schools)
- **Meet post-secondary enrollment goal only:** 70%+ post-secondary enrollment. (10 schools)
- **Meet neither goal:** Fewer than 90% graduate and fewer than 70% enroll in a post-secondary program after high school. (196 schools)

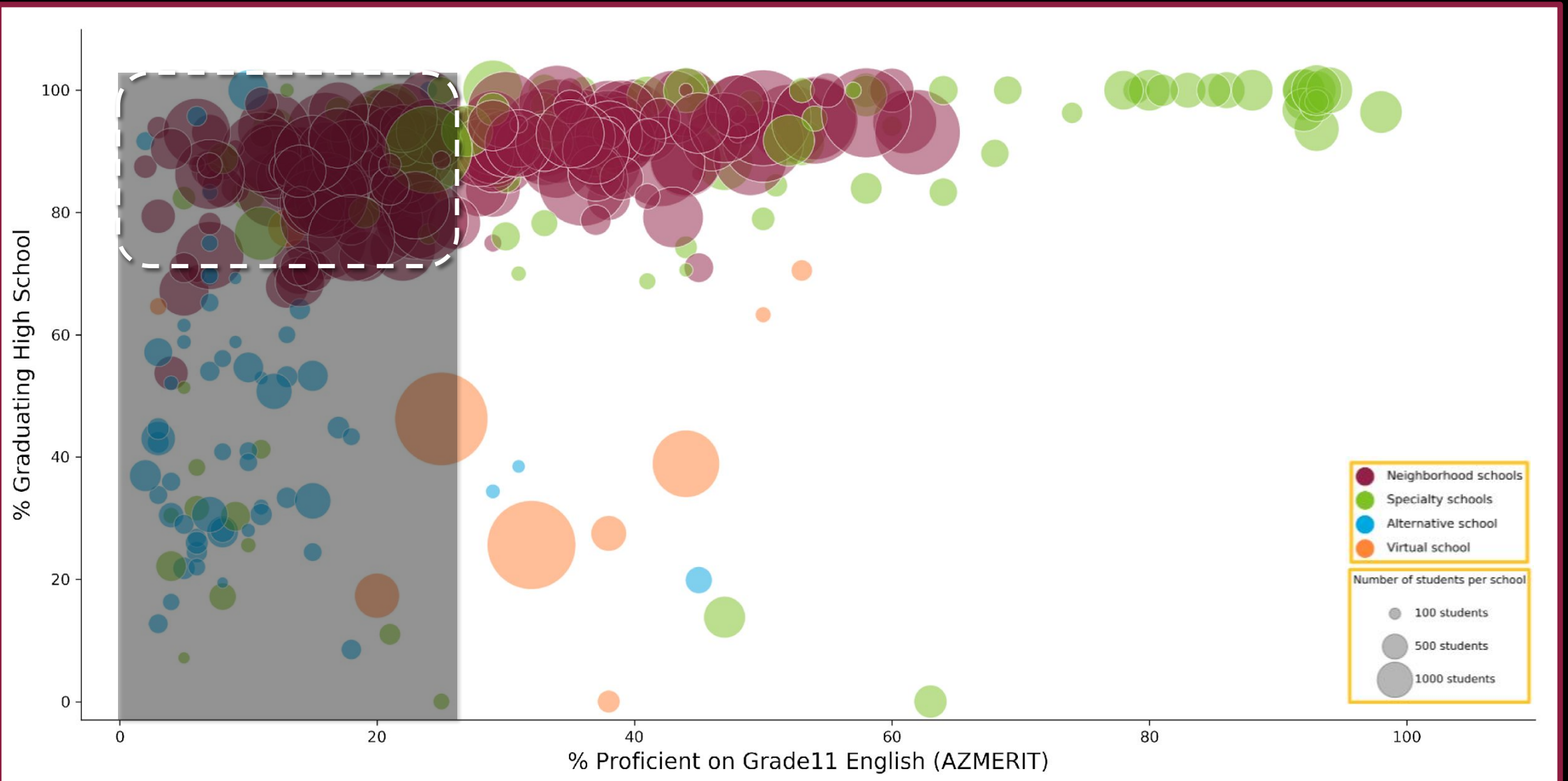
There Are 4 Types of High Schools

Most neighborhood schools graduate 70%+ even if they are in high poverty areas.



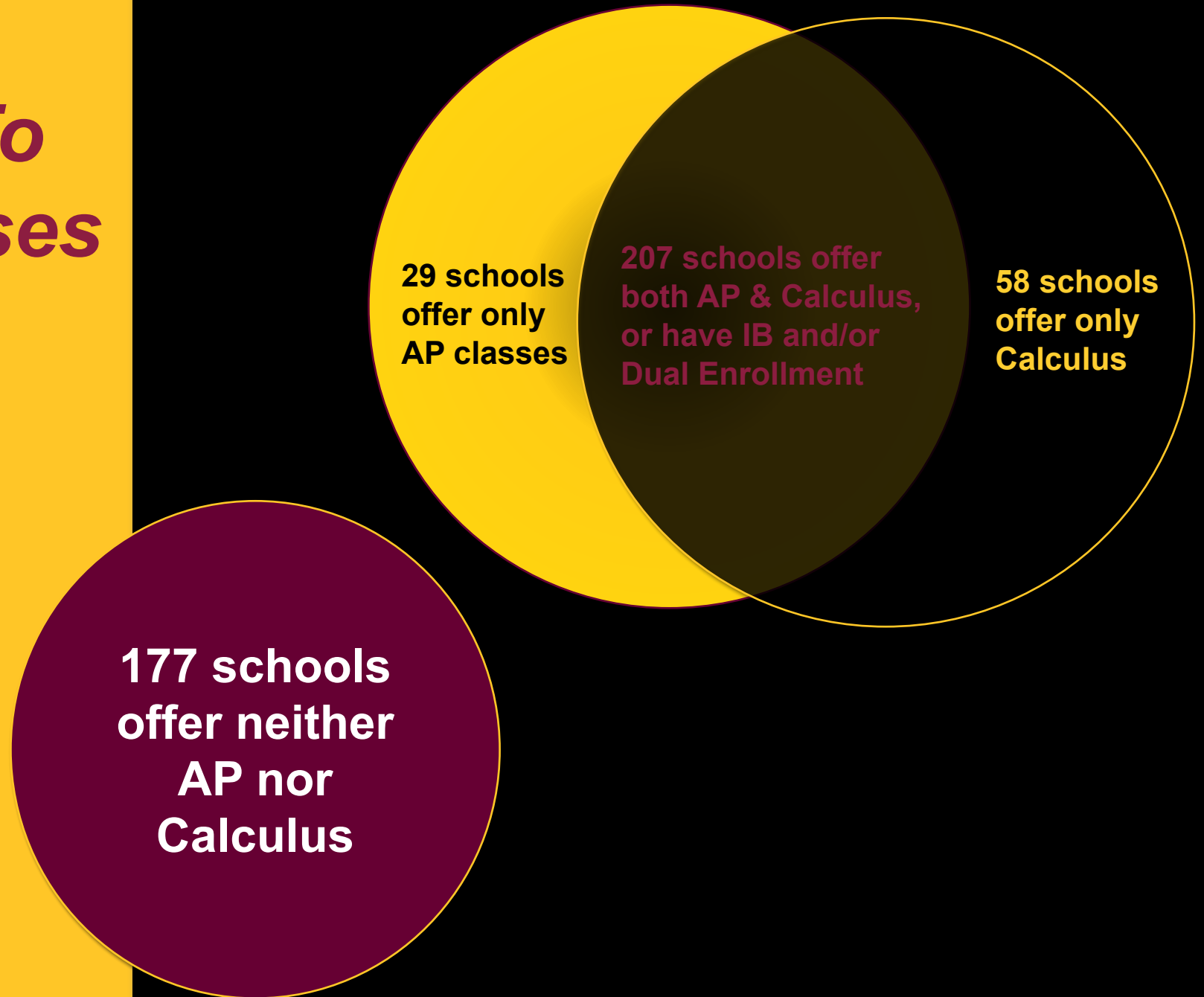
Academic Achievement & Graduation

Some schools have low academic achievement but high graduation rates



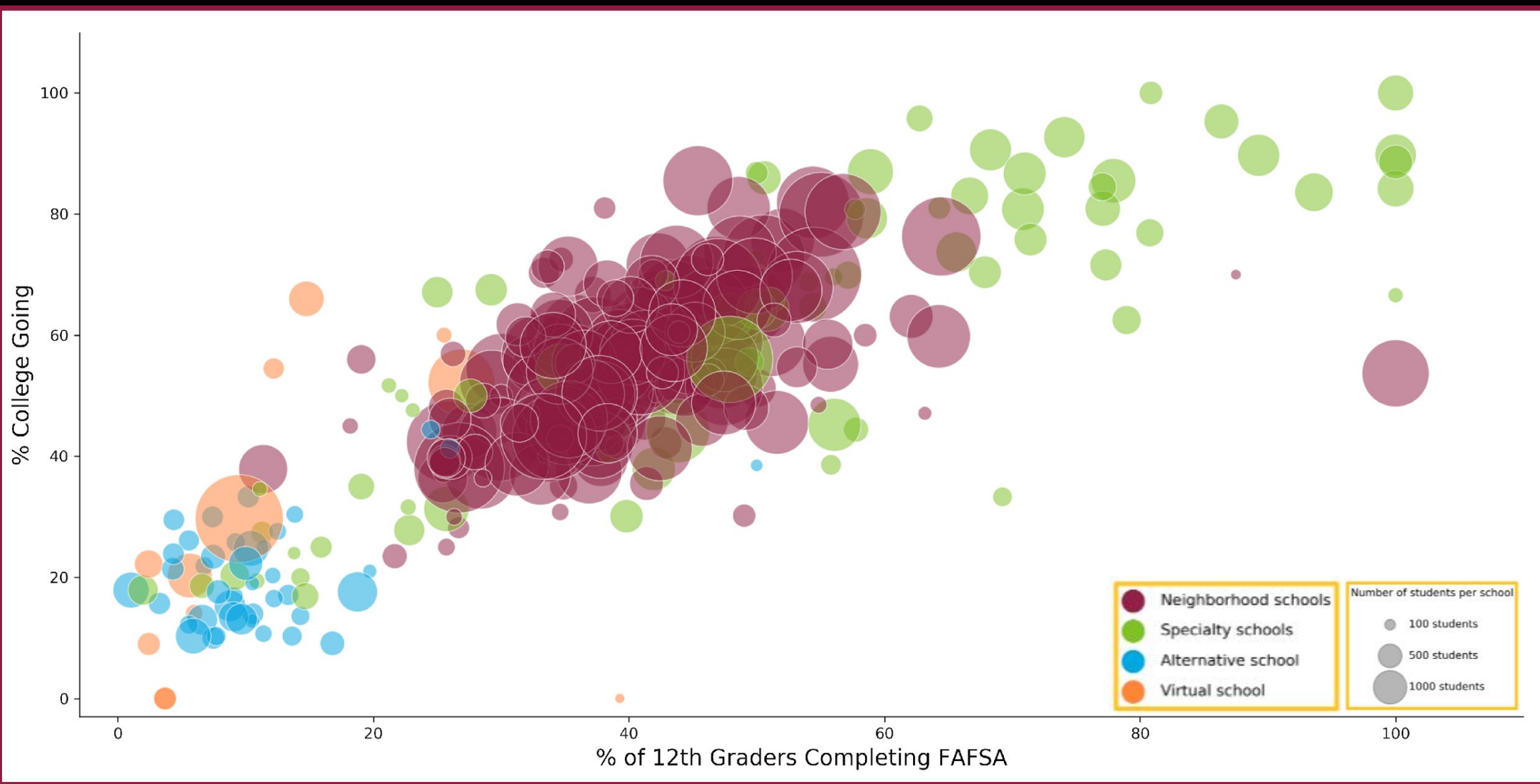
Some Don't Have Access To Advanced Courses

- 294 schools offer AP, Calculus, IB, and/or Dual Enrollment
- 177 schools offer neither
 - 97 are alternative schools
 - 80 are not alternative and...
 - ❑ 51 have 40%+ free/reduced lunch
 - ❑ 65 do not have boundaries, of which 47 are charters
 - ❑ 72 are small (500 or fewer students)
 - ❑ 40 are urban, 30 are town/rural



FAFSA Completion

For every 10 percentage point increase in school FAFSA completion, there is a 2.2 percentage point increase in college going rates



A background image showing a group of students in a classroom. In the foreground, a young Black male student is smiling and looking towards the camera. Behind him, other students are visible, some looking down, suggesting they are working on something.

Local Education Progress Meter

High School Outcomes

**Developing Resources To Spur
Discussion & Improvement**

Choose location :

City

Choose a city :

Tempe

Click on each dial below to see the results by subgroup for third grade reading, eighth grade math and high school graduation rate. Results are not available for district level college going at this time, but will be added when available.

Please note:
* Results are by school location, not students' addresses.
* To prevent identifying individual student results, values greater than 97% to 100% are listed as 98% and less than 3% are listed as 2%.

Third Grade Reading

43%

Eighth Grade Math

38%

High School Graduation Rate

83%

Post High School Enrollment Rate

55%

Choose location :

City

Choose a city :

Nogales

Click on each dial below to see the results by subgroup for third grade reading, eighth grade math and high school graduation rate. Results are not available for district level college going at this time, but will be added when available.

Please note:
* Results are by school location, not students' addresses.
* To prevent identifying individual student results, values greater than 97% to 100% are listed as 98% and less than 3% are listed as 2%.

Third Grade Reading

44%

Eighth Grade Math

28%

High School Graduation Rate

87%

Post High School Enrollment Rate

57%

Results by subgroup city of Tempe and Category : Third Grade Reading

Sub-category	Percentage	Sub-category	Percentage
Economically Disadvantaged	31%	Limited English Proficient	1%
Students with Disabilities	8%	White	64%
Hispanic/Latino	37%	Black	26%
Native American/ Alaskan Native	4%	Asian	N/A
Other	64%		

Choose location :

School

Choose a school:

Tempe High School Tempe Union High Sc

Submit

Click on each dial below to see the results by subgroup for third grade reading, eighth grade math and high school graduation rate. Results are not available for district level college going at this time, but will be added when available.

Please note:
* Results are by school location, not students' addresses.
* To prevent identifying individual student results, values greater than 97% to 100% are listed as 98% and less than 3% are listed as 2%.

Third Grade Reading

N/A

Eighth Grade Math

N/A

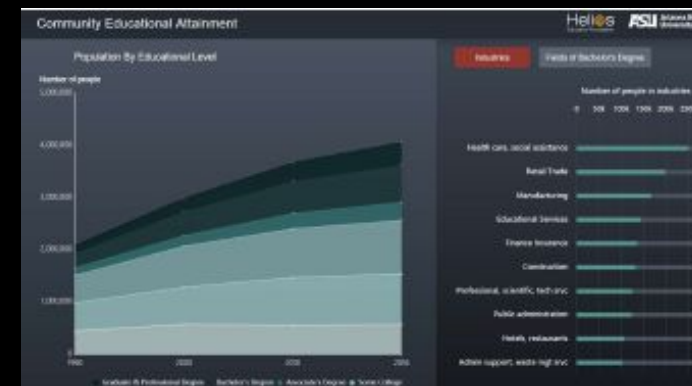
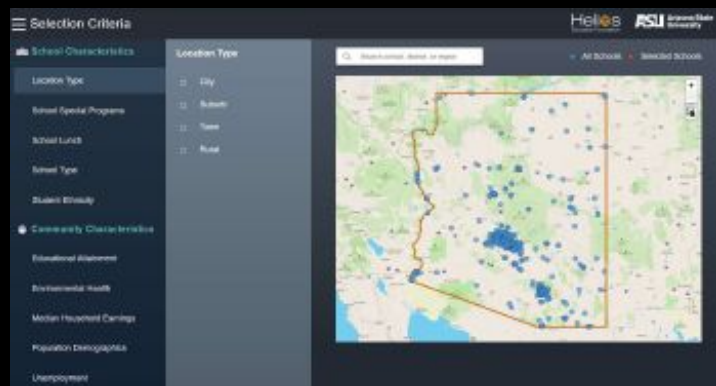
High School Graduation Rate

89%

Post High School Enrollment Rate

44%

High School Outcome Tool



We invite you to see the Decision Theater To See The HS Outcome Product

Data + ASU + Stakeholders =

Significantly better student outcomes & improved economic, social, cultural and health outcomes for the communities we serve

